



The Brookhaven



The Brookhaven is the luxurious townhome you have always dreamed of owning. Designed to combine the drama and excitement of contemporary design with the quiet elegance of traditional styling, the special attention to detail and wonderful features make this magnificent home shine.

You get an immediate sense of spaciousness as you walk into the dramatic entrance. The soaring two story foyer becomes a central gallery, which flows into the spacious living room flooded with light from the huge walk-in bay window. Adjacent to the living room, the large separate

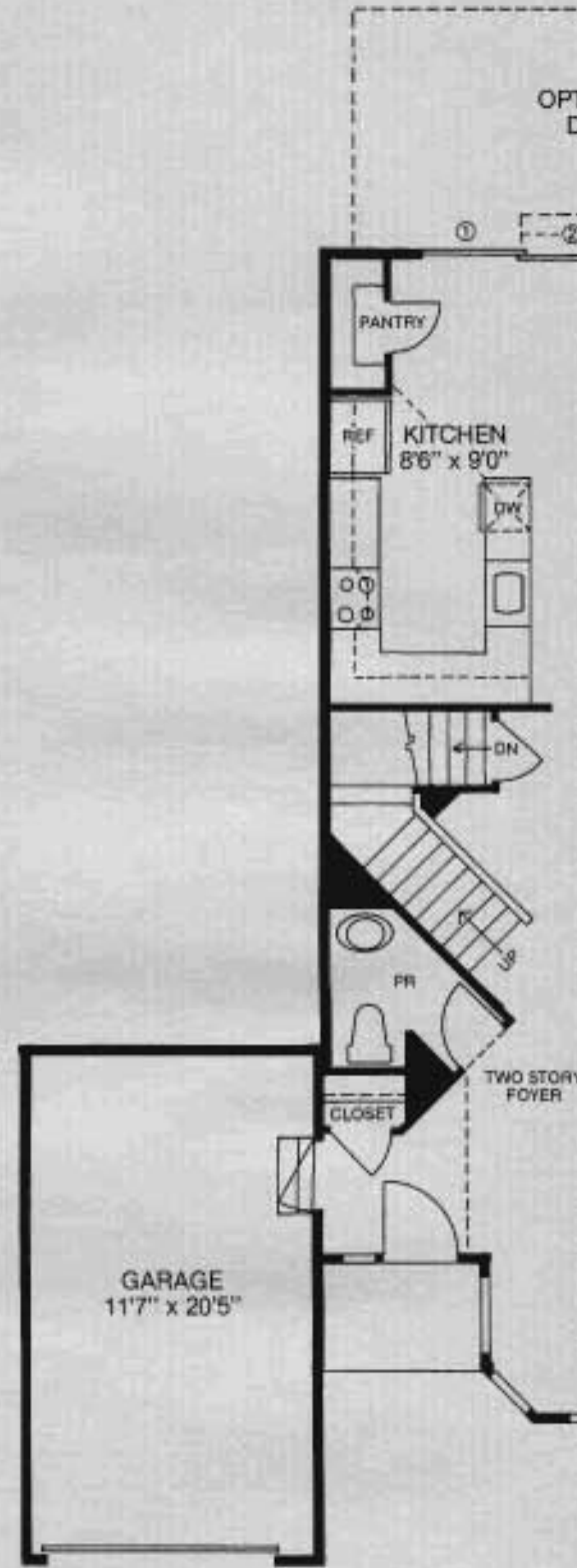
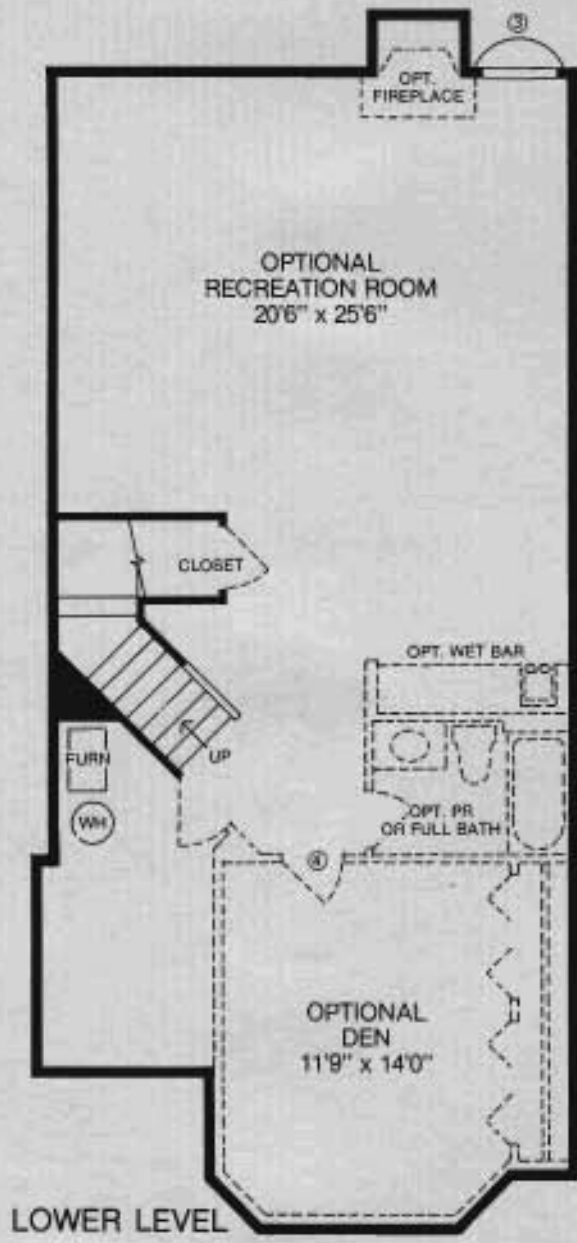
dining room is defined by classic columns. In the rear is the informal portion of the home, another expanse of space with the kitchen, breakfast area and family room. The kitchen is a gourmet's delight with the finest appliances, plenty of counterspace and cabinets. The breakfast area and family room are light and airy with easy access to the backyard. And of course, there is a cozy family room fireplace. A powder room and main level garage complete this floor.

A master suite is sumptuous with a room-size walk-in closet and a lavish master bath that features a soaking tub, double bowl vanity, separate

shower and even an available fireplace that adjoins the master bedroom and soaking tub. There are two other large private bedrooms separated by a dramatic overlook to the foyer below. A convenient laundry room and second hall bath complete the upstairs plan.

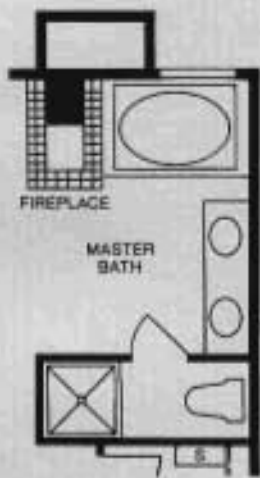
Downstairs, the large lower level gives you space to complete a huge optional recreation room, a powder room or full bath, a fire place, and a wet bar. Plus, there is plenty of storage space.

Exciting architectural design created with space, comfort and visual drama is the hallmark of the Brookhaven.

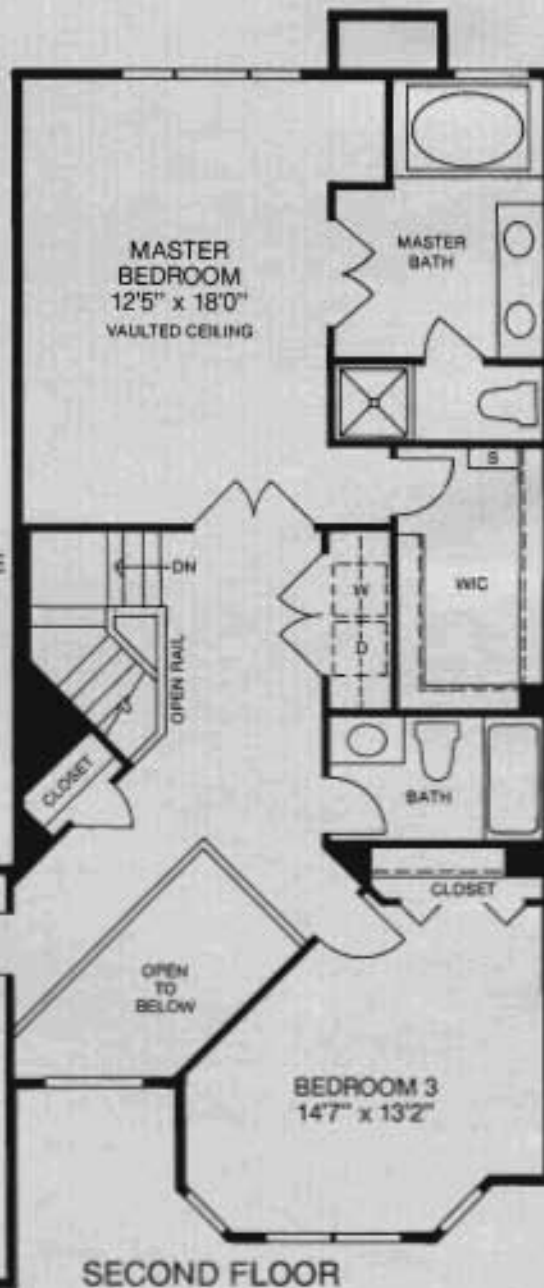


- ① RAIL HERE WITH WALKOUT HOME UNLESS DECK IS SELECTED.
- ② STEPS HERE WITH INGROUND BASEMENT. NUMBER OF STEPS DEPENDS ON GRADE.

- ③ WINDOW WELL WITH INGROUND BASEMENT ONLY.
- ④ LOCATION OF SINGLE DOOR TO STORAGE WHEN DEN NOT FINISHED.



PARTIAL
SECOND FLOOR
W/MASTER BATH FIREPLACE



All dimensions are approximate and plans and specifications are subject to modifications and improvements at any time without notice.

Copyright © by William L. Berry & Co., Inc.
A product of William L. Berry & Co., Inc.





William L. Berry & Co., Inc.
Award Winning Builders and Developers

Winner of 27 Design Awards!